

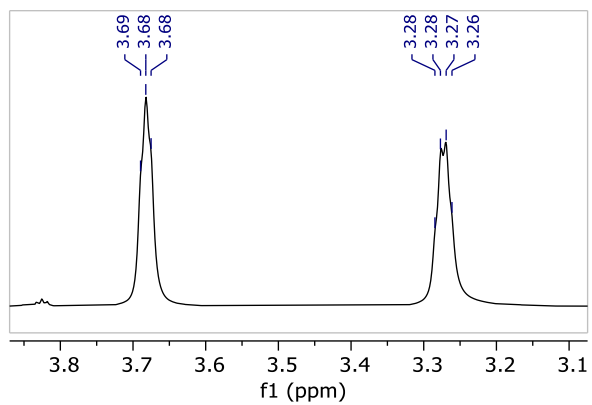
7.26 CDCl3

5.02

3.69
3.68
3.68
3.28
3.28
3.27
3.26

2.71

1.43



0.95

2.00

2.00

0.80

9.19

9.5 9.0 8.5 8.0 7.5 7.0 6.5 6.0 5.5 5.0 4.5 4.0 3.5 3.0 2.5 2.0 1.5 1.0 0.5 0.0 -0.5

f1 (ppm)